

Warwick School District

2017-2018

Student Performance Review



Dr. Ron Hallett
Director of Curriculum, Instruction and Assessment
November 6, 2018

Developments in Assessment

- ❑ State prepares for a new reporting system called the “Future Ready PA Index”
- ❑ State maintains the SPP (School Performance Profile) for educator evaluation only
- ❑ June/July, 2018: Student performance file made available to district
- ❑ State provides phase one data for the Future Ready PA Index
- ❑ October 1, 2018: Student performance data uploaded to State Database
- ❑ October 2018: State releases student performance averages for PSSA and Keystone exams
- ❑ October 29, 2018: District PVAAS data released to districts
- ❑ October 30, 2018: State releases district preliminary PSSA/Keystone building performance data
- ❑ October 30, 2018: State releases district/school performance goals
- ❑ TBD: State releases building student performance data
- ❑ TBD: State releases district SPP score
- ❑ TBD: State releases the Future Ready PA Index



Items Covered

- ❑ A brief overview of the Future Ready PA Index
- ❑ PSSA
- ❑ Keystone Exams
- ❑ PVAAS
- ❑ Graduation Rate
- ❑ Performance in Advanced Placement courses
- ❑ SAT
- ❑ ACT
- ❑ Regular Attendance (based on definition of chronic absenteeism)
- ❑ Career Standards Benchmark



The Future Ready PA Index

Warwick SHS

[School Performance](#)
[School Fast Facts](#)
[District Fast Facts](#)

Select a set of measures to get started

Key for Progress Measures

State Assessment Measures

Percent Proficient/Advanced in English Language Arts/Literature

All Student Group Meets Interim Goal/Improvement Target

Academic Growth Expectations in English Language Arts/Literatures

All Student Group Did Not Meet the Standard Demonstrating Growth

Percent Proficient/Advanced in Mathematics/Algebra 1

All Student Group Meets 2030 Statewide Goal

Academic Growth Expectations in Mathematics/Algebra 1

All Student Group Meets the Standard Demonstrating Growth

[View All State Assessment Measures](#)

On-Track Measures

Percent English Language Proficiency

All Student Group

Percent Regular Attendance

All Student Group Meets Performance Standard

[View All On-Track Measures](#)

College and Career Measures

Percent Career Standards Benchmark

All Student Group Did Not Meet Performance Standard

Percent Four-Year Cohort Graduation

All Student Group Meets 2030 Statewide Goal

[View All College and Career Measures](#)

Warwick SHS

[School Performance](#)
[School Fast Facts](#)
[District Fast Facts](#)

301 W Orange St
Littiz, PA 17543
717-626-3700

Map data ©2018 Google 5 km Terms of Use Report a map error

[School Website](#)

Progress Towards Goal/Standard

- Meets or Exceeds Statewide Goal
- Meets or Exceeds Interim Target
- Not Meeting Statewide Goal/Interim Target

Current and Previous Performance Comparison

- Increase in Performance from the Previous Year
- Maintained the Same Performance from the Previous Year
- Decrease in Performance from the Previous Year

Percent Enrollment by Race/Ethnicity

American Indian/Alaskan Native	0.5%
Asian	2.2%
Black	2.4%
Native Hawaiian or other Pacific Islander	0.1%
Hispanic	6.1%
White	87.4%
2 or More Races	1.3%

Percent Enrollment by Student Groups

Economically Disadvantaged	26.3%
English Language Learner	1.3%
Special Education	10.0%
Foster Care	Coming Soon!
Homeless	Coming Soon!
Military Connected	Coming Soon!

Grades Offered

9, 10, 11, 12

Title I School

No

School Enrollment

1385

Percent of Gifted Students

70%

Supporting Intermediate Unit (IU)

Lancaster-Lebanon IU 13

Percent Enrollment by Gender

Male	52.4%
Female	47.6%

[School Safety Report](#)
[Special Education Data Report](#)
[State Audit](#)

Warwick SD

[School Performance](#)
[School Fast Facts](#)
[District Fast Facts](#)

301 W Orange St
Littiz, PA 17543
717-626-3734

Map data ©2018 Google 5 km Terms of Use Report a map error

[District Website](#)

Percent Enrollment by Student Groups

Economically Disadvantaged	28.0%
English Language Learner	1.7%
Special Education	11.6%
Foster Care	Coming Soon!
Homeless	Coming Soon!
Military Connected	Coming Soon!

Percent Enrollment by Gender

Male	51.6%
Female	48.4%

Percent Enrollment by Race/Ethnicity

American Indian/Alaskan Native	0.2%
Asian	2.2%
Black	2.3%
Native Hawaiian or other Pacific Islander	0.2%
Hispanic	7.2%
White	85.3%
2 or More Races	2.5%

Number of Schools

6

Grades Offered

KSH, KSF, 1, 2, 3, 4, 5, 6, 7, 8, 9, 10, 11, 12

District Enrollment

4114

Percent of Gifted Students

5.4%

Enrollment in Partnering Career and Technical Center(s)

110

Charter School Enrollment

44

Geographic Size of District(Square Miles)

39.9

Partnering Career and Technical Center

Lancaster County CTC

Supporting Intermediate Unit(IU)

Lancaster-Lebanon IU 13

[School Safety Report](#)
[Special Education Data Report](#)
[State Audit](#)
[Fiscal Information](#)



John Beck



State Assessment Measures

Percent Proficient/Advanced in
English Language Arts/Literature

All Student
Group Meets
Interim
Goal/Improvement
Target



Academic Growth Expectations in
English Language Arts/Literatures

All Student
Group Meets the
Standard
Demonstrating
Growth



Percent Proficient/Advanced in
Mathematics/Algebra 1

All Student
Group Meets
Interim
Goal/Improvement
Target



Academic Growth Expectations in
Mathematics/Algebra 1

All Student
Group Meets the
Standard
Demonstrating
Growth



[View All State Assessment
Measures](#)



On-Track Measures

Percent English Language
Proficiency

All Student
Group



Percent Regular Attendance

All Student
Group Exceeds
Performance
Standard



[View All On-Track Measures](#)



College and Career Measures

Percent Career Standards
Benchmark

All Student
Group Exceeds
Performance
Standard



Percent Four-Year Cohort
Graduation

All Student
Group

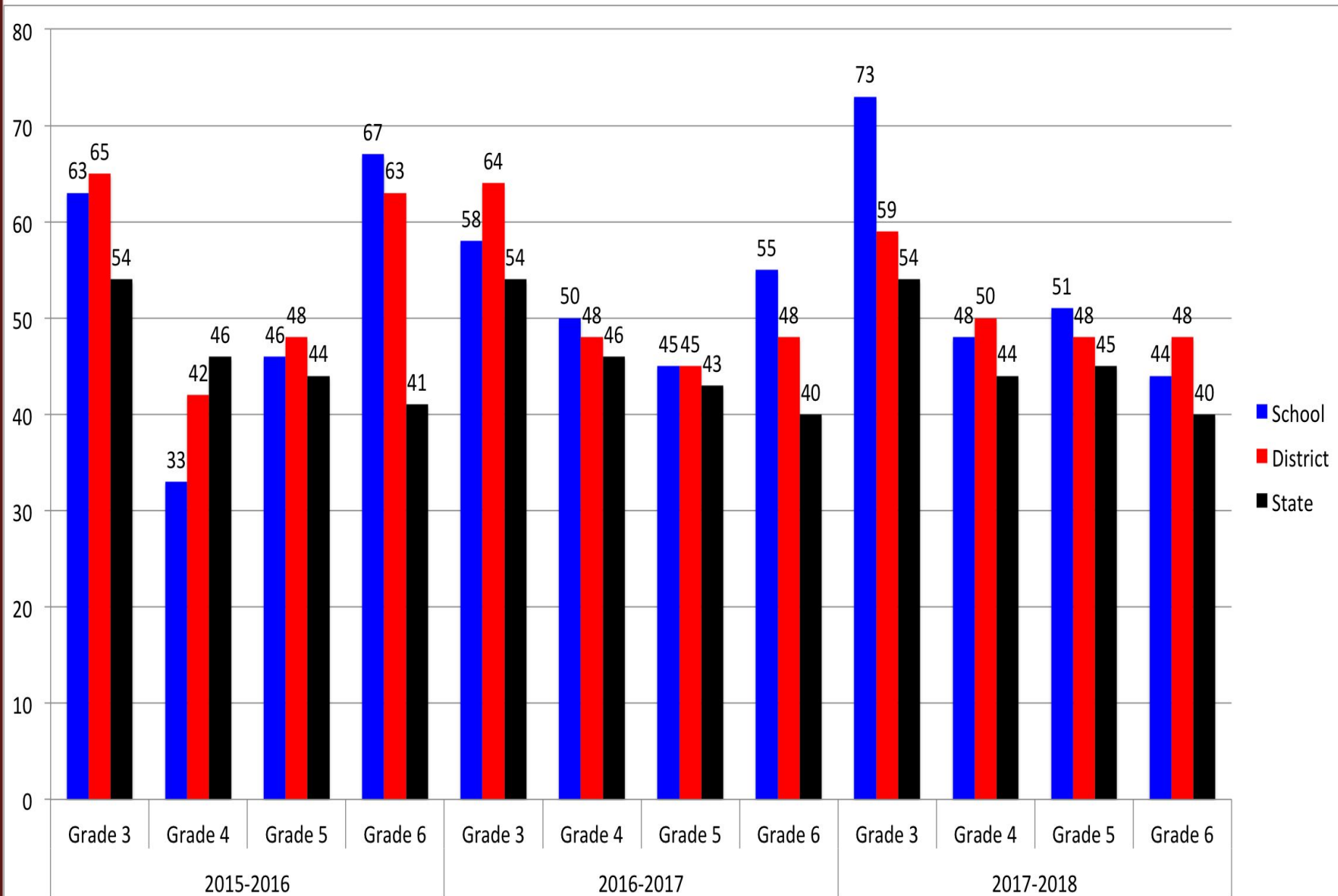


[View All College and Career
Measures](#)



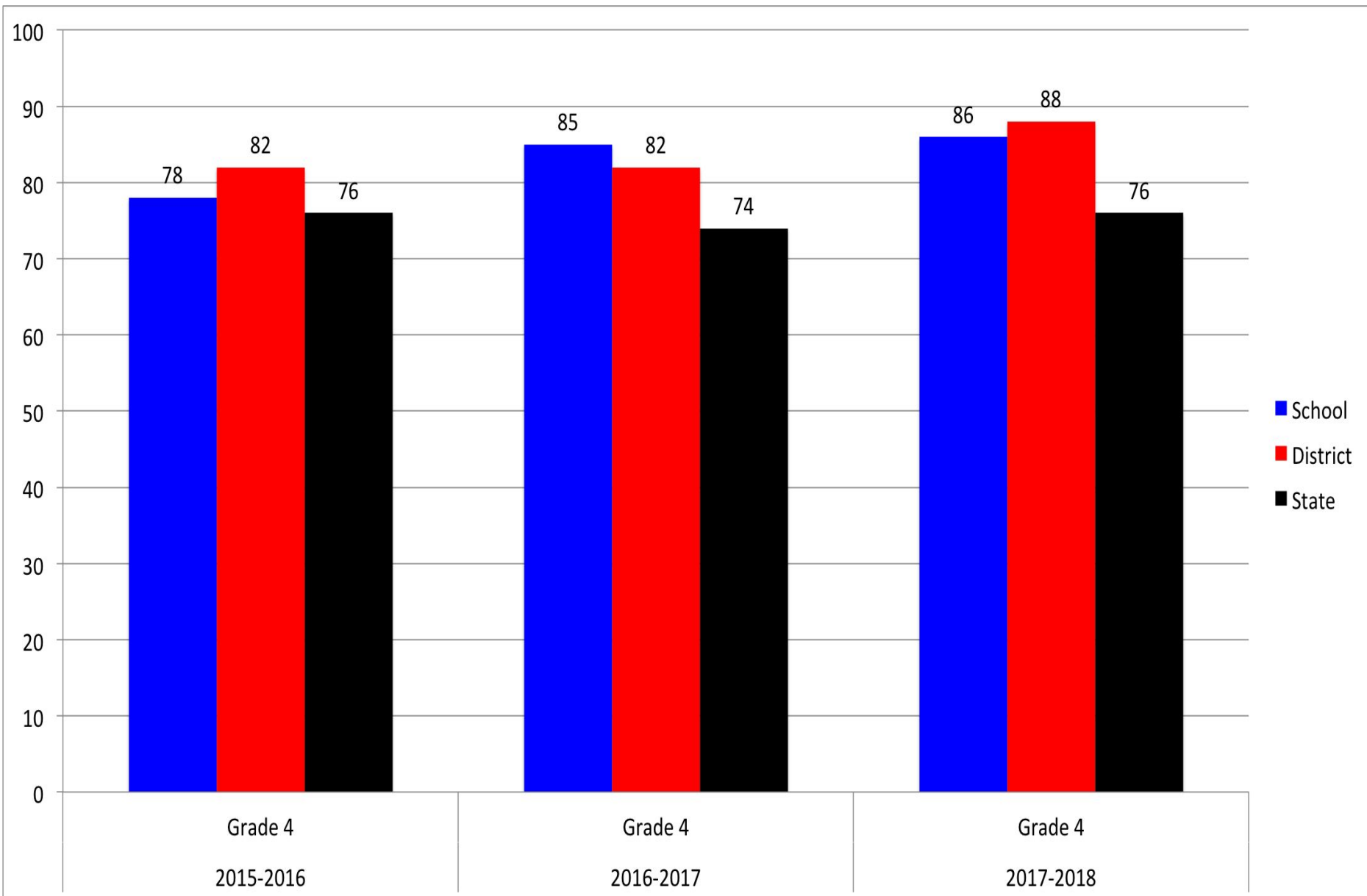
John Beck

PSSA Math



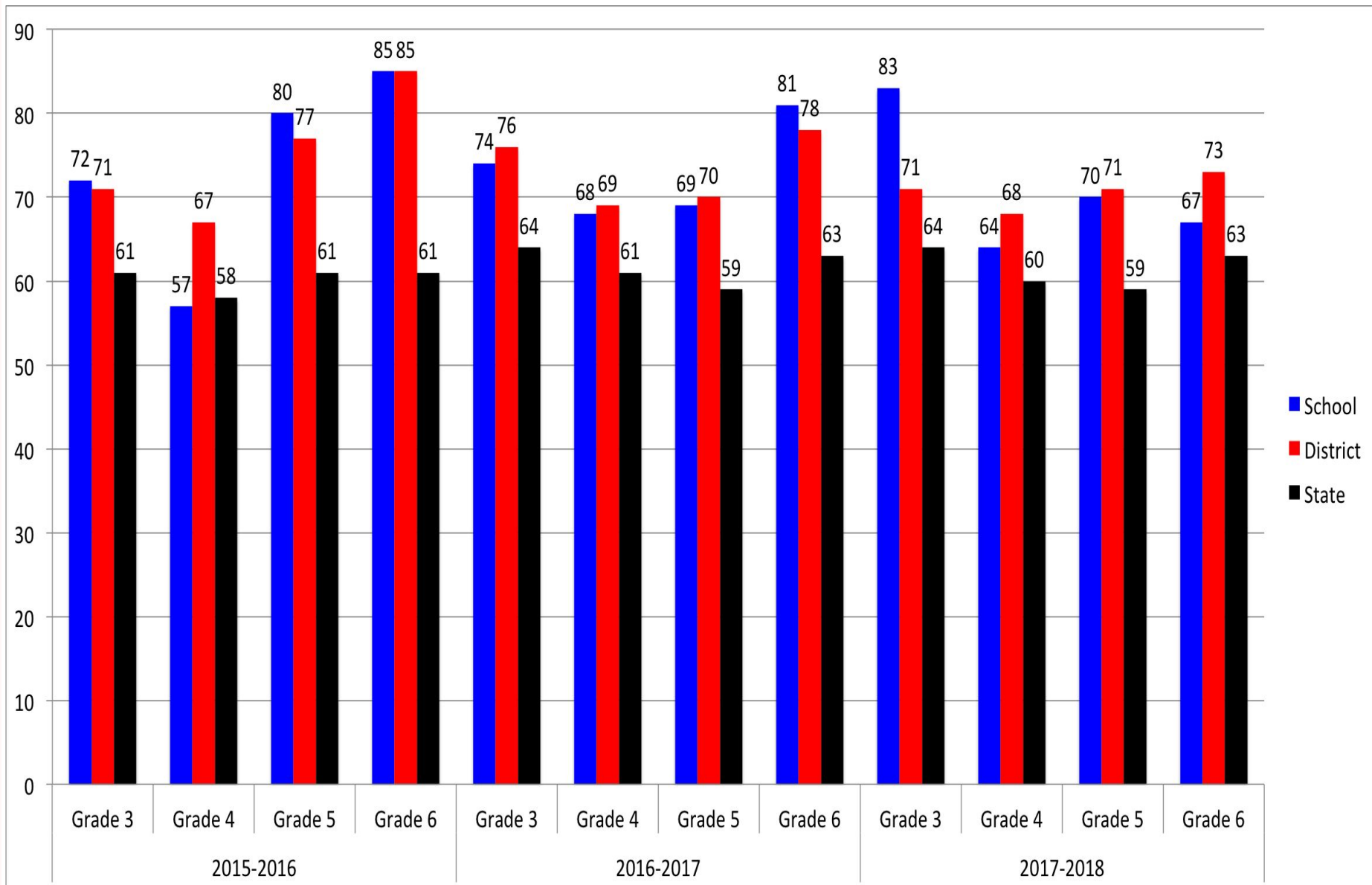
John Beck


PSSA Science



John Beck

PSSA English Language Arts



	Math	ELA	Science
PSSA, Grade 4			
Value-Added	2018 3Yr A	2018 3Yr A	2018 3Yr A
Diagnostic			
PSSA, Grade 5			
Value-Added	2018 3Yr A	2018 3Yr A	
Diagnostic			
PSSA, Grade 6			
Value-Added	2018 3Yr A	2018 3Yr A	
Diagnostic			

John Beck
PVAAS



John R. Bonfield



State Assessment Measures

Percent Proficient/Advanced in English Language Arts/Literature

All Student Group Meets Interim Goal/Improvement Target



Academic Growth Expectations in English Language Arts/Literatures

All Student Group Meets the Standard Demonstrating Growth



Percent Proficient/Advanced in Mathematics/Algebra 1

All Student Group Meets Interim Goal/Improvement Target



Academic Growth Expectations in Mathematics/Algebra 1

All Student Group Meets the Standard Demonstrating Growth



[View All State Assessment Measures](#)



On-Track Measures

Percent English Language Proficiency

All Student Group



Percent Regular Attendance

All Student Group Exceeds Performance Standard



[View All On-Track Measures](#)



College and Career Measures

Percent Career Standards Benchmark

All Student Group Exceeds Performance Standard



Percent Four-Year Cohort Graduation

All Student Group

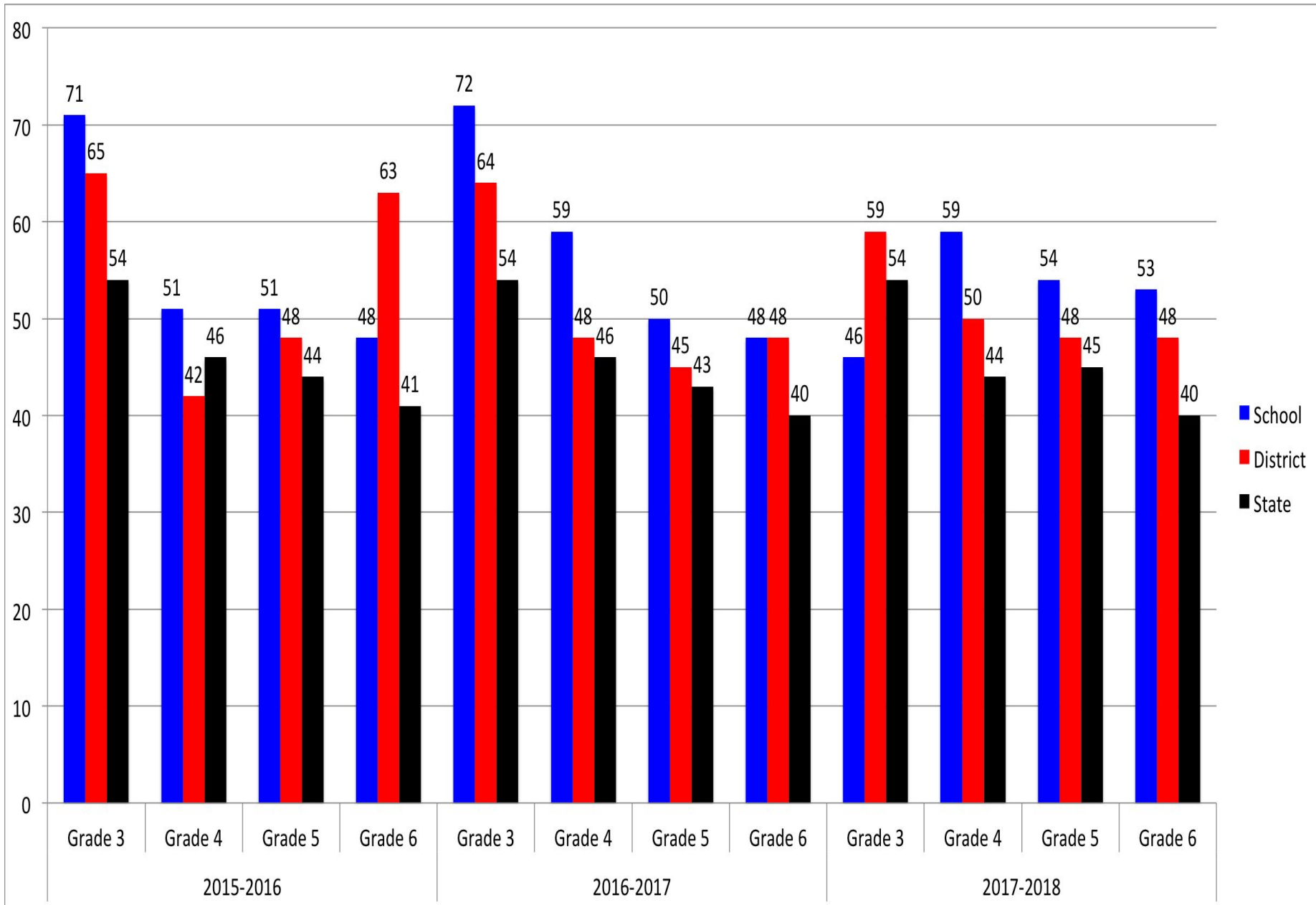


[View All College and Career Measures](#)



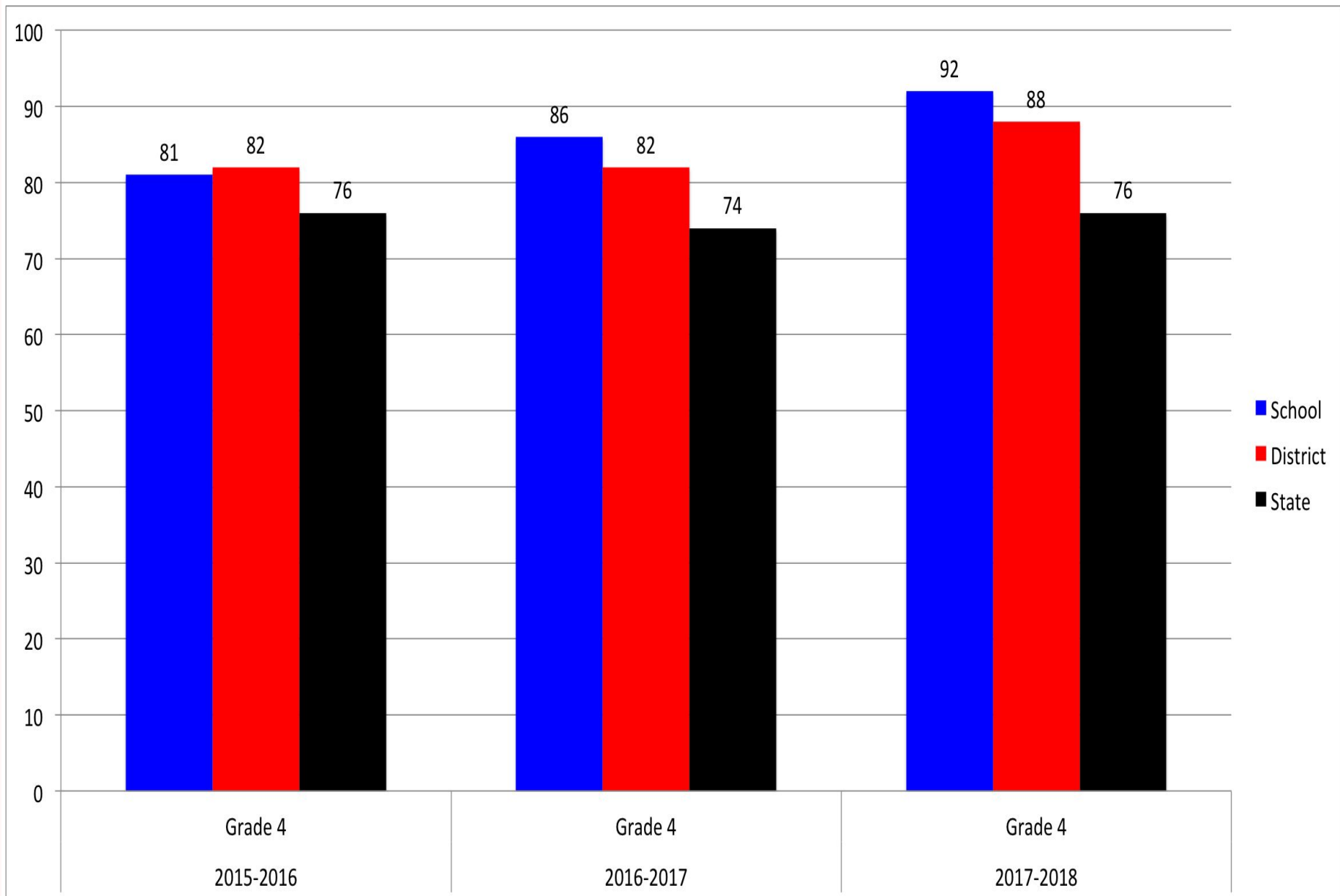
John R. Bonfield

PSSA Math



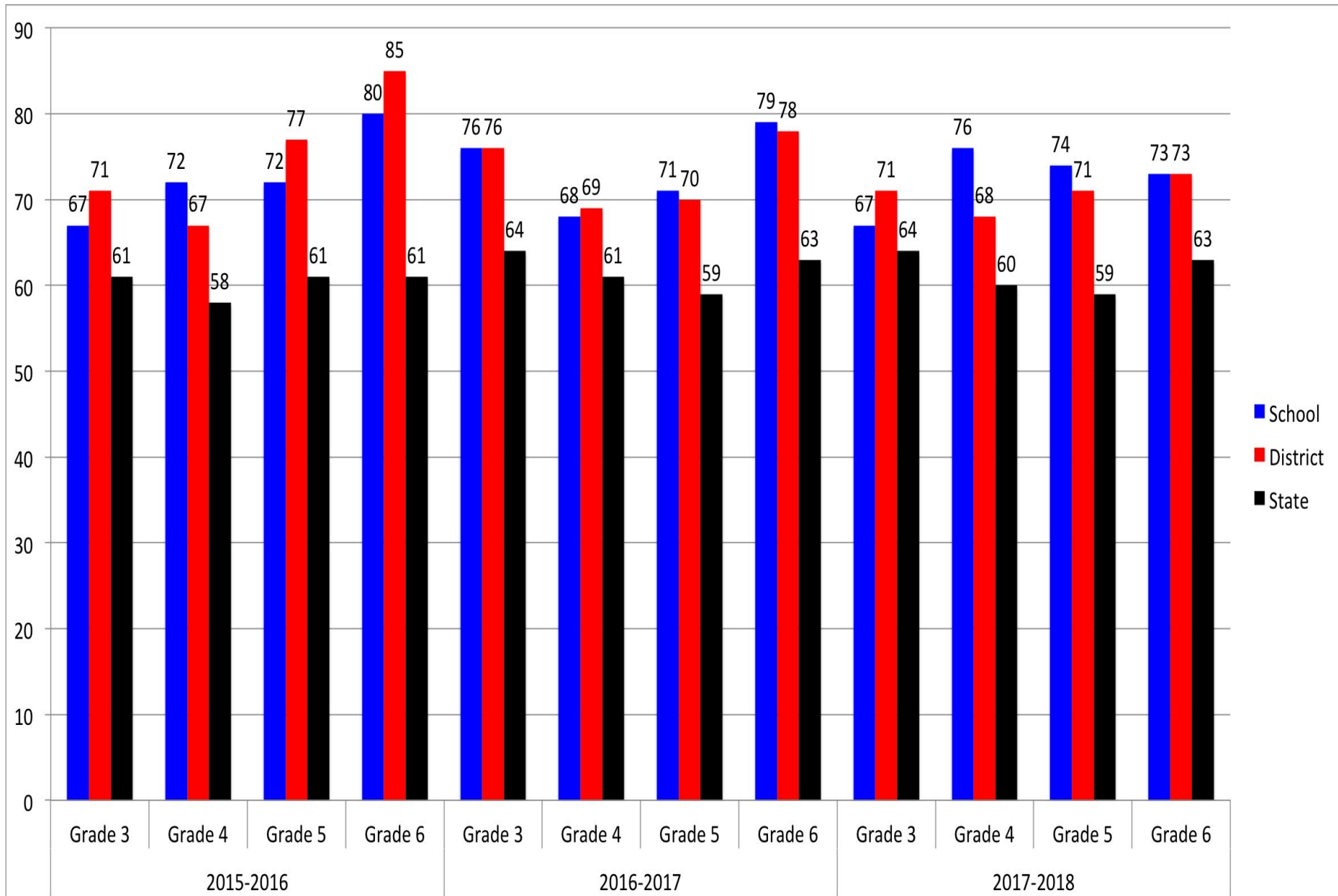
John R. Bonfield

PSSA Science



John R. Bonfield

PSSA English Language Arts



	Math	ELA	Science
PSSA, Grade 4			
Value-Added	2018 3Yr A	2018 3Yr A	2018 3Yr A
Diagnostic			
PSSA, Grade 5			
Value-Added	2018 3Yr A	2018 3Yr A	
Diagnostic			
PSSA, Grade 6			
Value-Added	2018 3Yr A	2018 3Yr A	
Diagnostic			

John R. Bonfield
PVAAS



Kissel Hill



State Assessment Measures

Percent Proficient/Advanced in English Language Arts/Literature

All Student Group Meets Interim Goal/Improvement Target



Academic Growth Expectations in English Language Arts/Literatures

All Student Group Did Not Meet the Standard Demonstrating Growth



Percent Proficient/Advanced in Mathematics/Algebra 1

All Student Group Meets Interim Goal/Improvement Target



Academic Growth Expectations in Mathematics/Algebra 1

All Student Group Did Not Meet the Standard Demonstrating Growth



[View All State Assessment Measures](#)



On-Track Measures

Percent English Language Proficiency

All Student Group



Percent Regular Attendance

All Student Group Exceeds Performance Standard



[View All On-Track Measures](#)



College and Career Measures

Percent Career Standards Benchmark

All Student Group Exceeds Performance Standard



Percent Four-Year Cohort Graduation

All Student Group

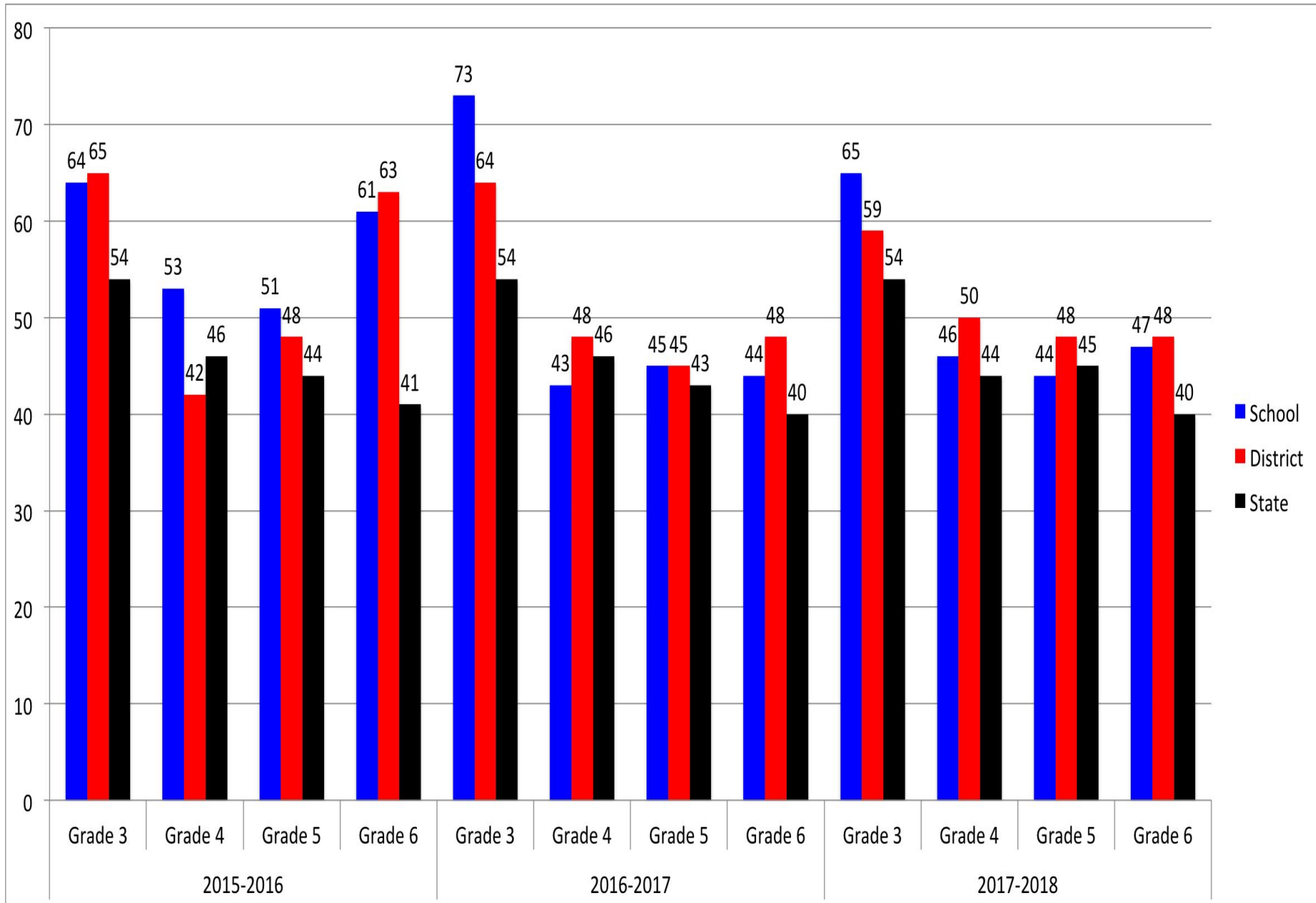


[View All College and Career Measures](#)



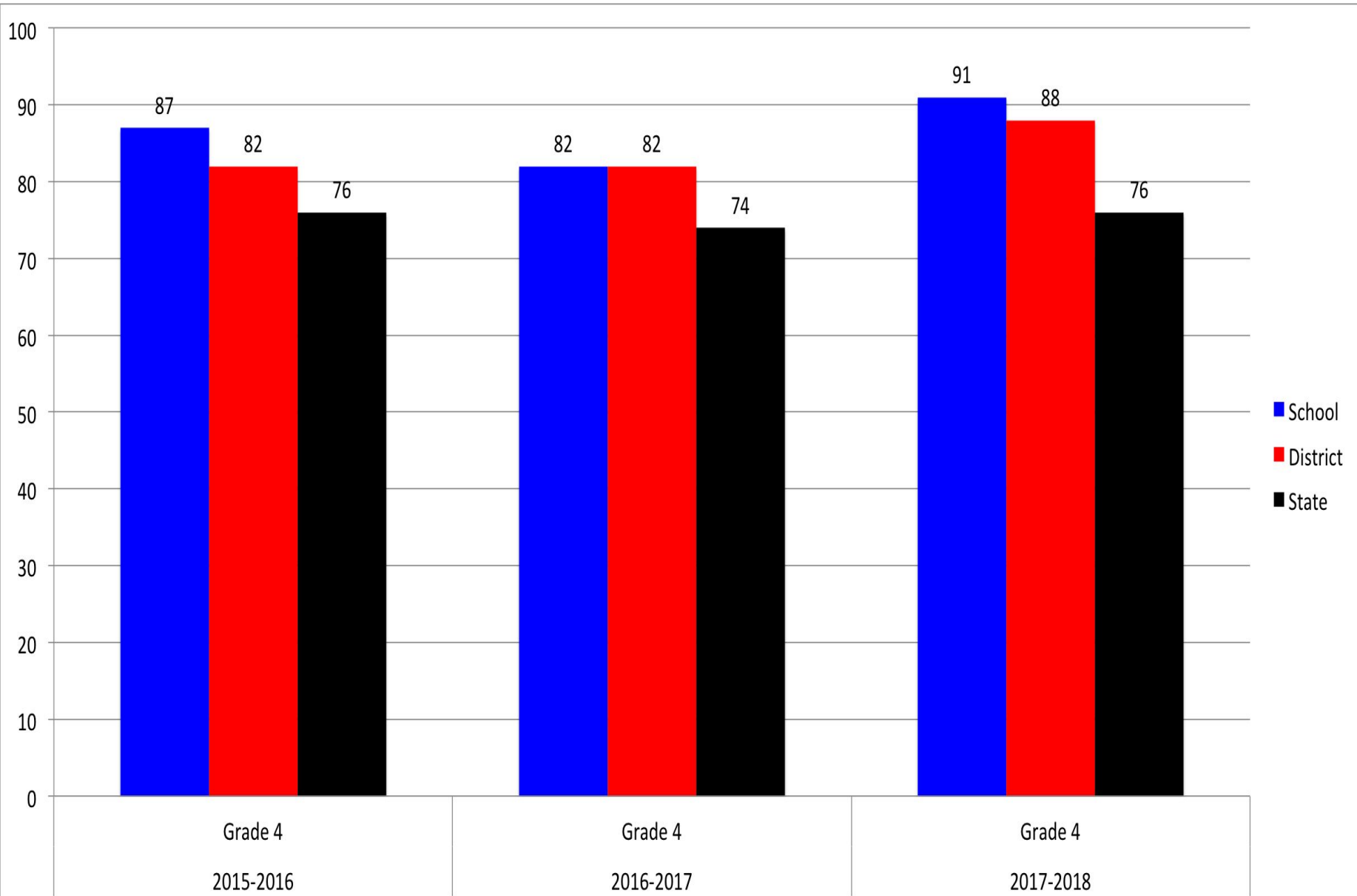
Kissel Hill

PSSA Math



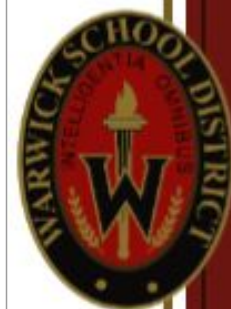
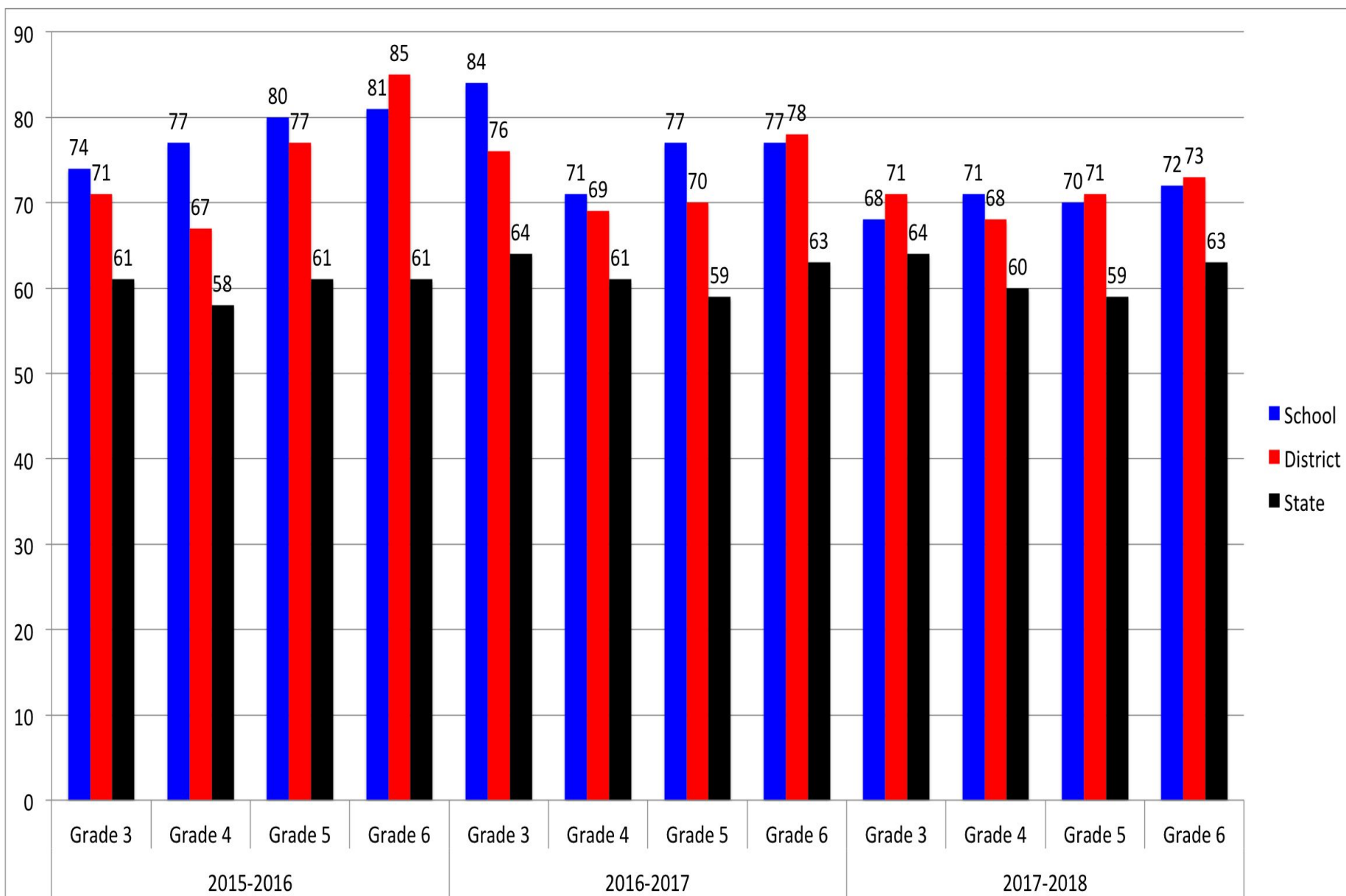
Kissel Hill



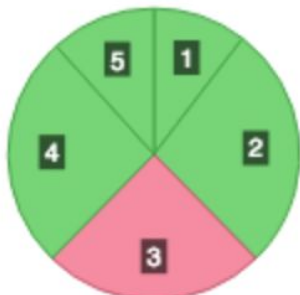
PSSA Science



Kissel Hill

PSSA English Language Arts



	Math		ELA		Science	
PSSA, Grade 4						
Value-Added	2018	3Yr A	2018	3Yr A	2018	3Yr A
Diagnostic						
PSSA, Grade 5						
Value-Added	2018	3Yr A	2018	3Yr A		
Diagnostic						
PSSA, Grade 6						
Value-Added	2018	3Yr A	2018	3Yr A		
Diagnostic						

Kissel Hill PVAAS



Lititz Elementary



State Assessment Measures

Percent Proficient/Advanced in English Language Arts/Literature

All Student Group Meets Interim Goal/Improvement Target



Academic Growth Expectations in English Language Arts/Literatures

All Student Group Exceeds the Standard Demonstrating Growth



Percent Proficient/Advanced in Mathematics/Algebra 1

All Student Group Meets Interim Goal/Improvement Target



Academic Growth Expectations in Mathematics/Algebra 1

All Student Group Exceeds the Standard Demonstrating Growth



[View All State Assessment Measures](#)



On-Track Measures

Percent English Language Proficiency

All Student Group



Percent Regular Attendance

All Student Group Meets Performance Standard



[View All On-Track Measures](#)



College and Career Measures

Percent Career Standards Benchmark

All Student Group Exceeds Performance Standard



Percent Four-Year Cohort Graduation

All Student Group

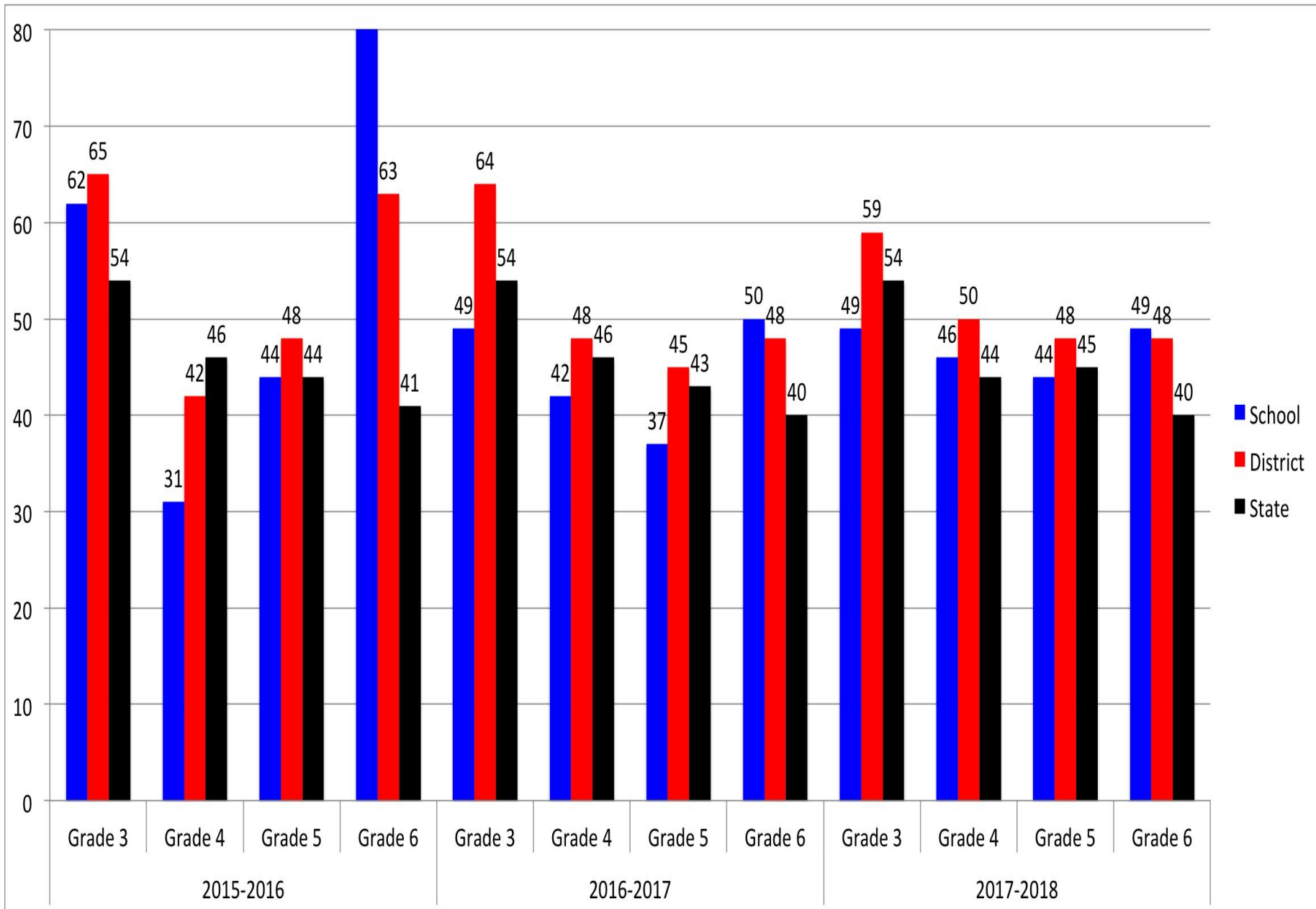


[View All College and Career Measures](#)



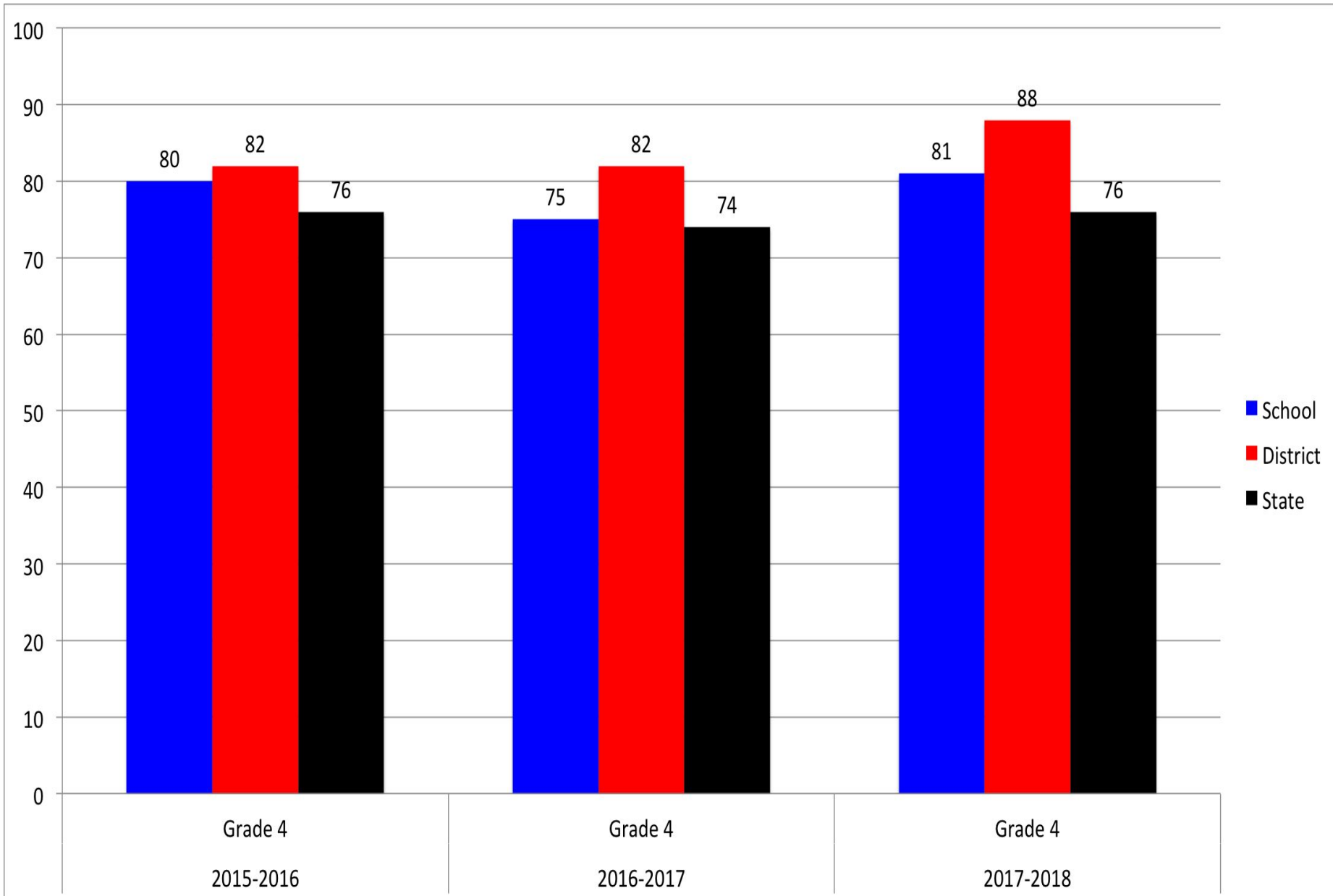
Lititz Elementary

PSSA Math



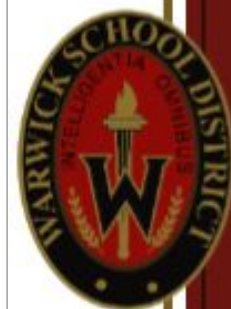
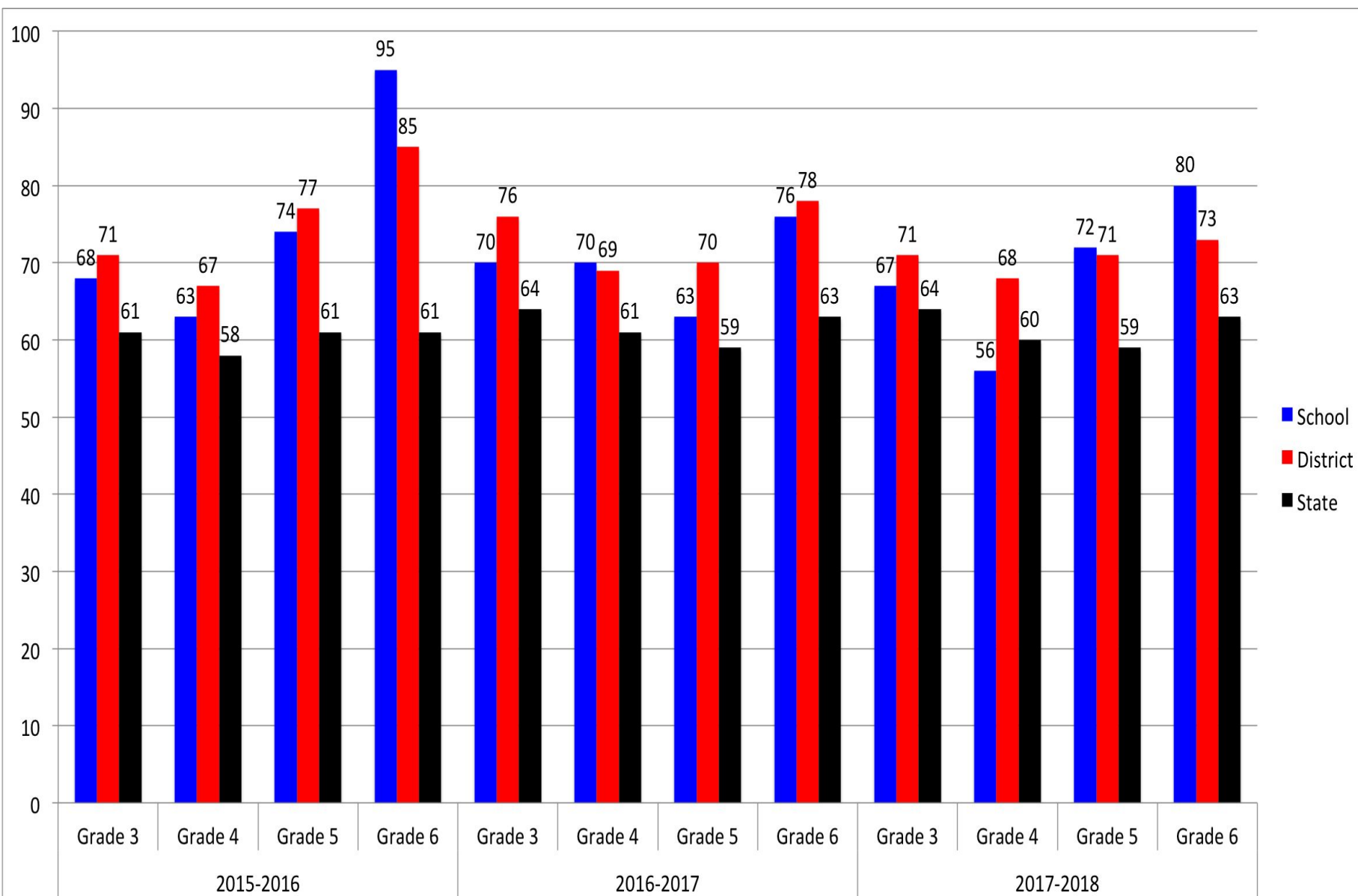
Lititz Elementary

PSSA Science



Lititz Elementary

PSSA English Language Arts



	Math	ELA	Science
PSSA, Grade 4			
Value-Added	2018 3Yr A	2018 3Yr A	2018 3Yr A
Diagnostic			
PSSA, Grade 5			
Value-Added	2018 3Yr A	2018 3Yr A	
Diagnostic			
PSSA, Grade 6			
Value-Added	2018 3Yr A	2018 3Yr A	
Diagnostic			

Lititz Elementary

PVAAS



Warwick Middle School



State Assessment Measures

Percent Proficient/Advanced in English Language Arts/Literature

All Student Group Meets Interim Goal/Improvement Target



Academic Growth Expectations in English Language Arts/Literatures

All Student Group Did Not Meet the Standard Demonstrating Growth



Percent Proficient/Advanced in Mathematics/Algebra 1

All Student Group Did Not Meet Interim Goal/Improvement Target



Academic Growth Expectations in Mathematics/Algebra 1

All Student Group Did Not Meet the Standard Demonstrating Growth



[View All State Assessment Measures](#)



On-Track Measures

Percent English Language Proficiency

All Student Group



Percent Regular Attendance

All Student Group Exceeds Performance Standard



[View All On-Track Measures](#)



College and Career Measures

Percent Career Standards Benchmark

All Student Group Meets Performance Standard



Percent Four-Year Cohort Graduation

All Student Group

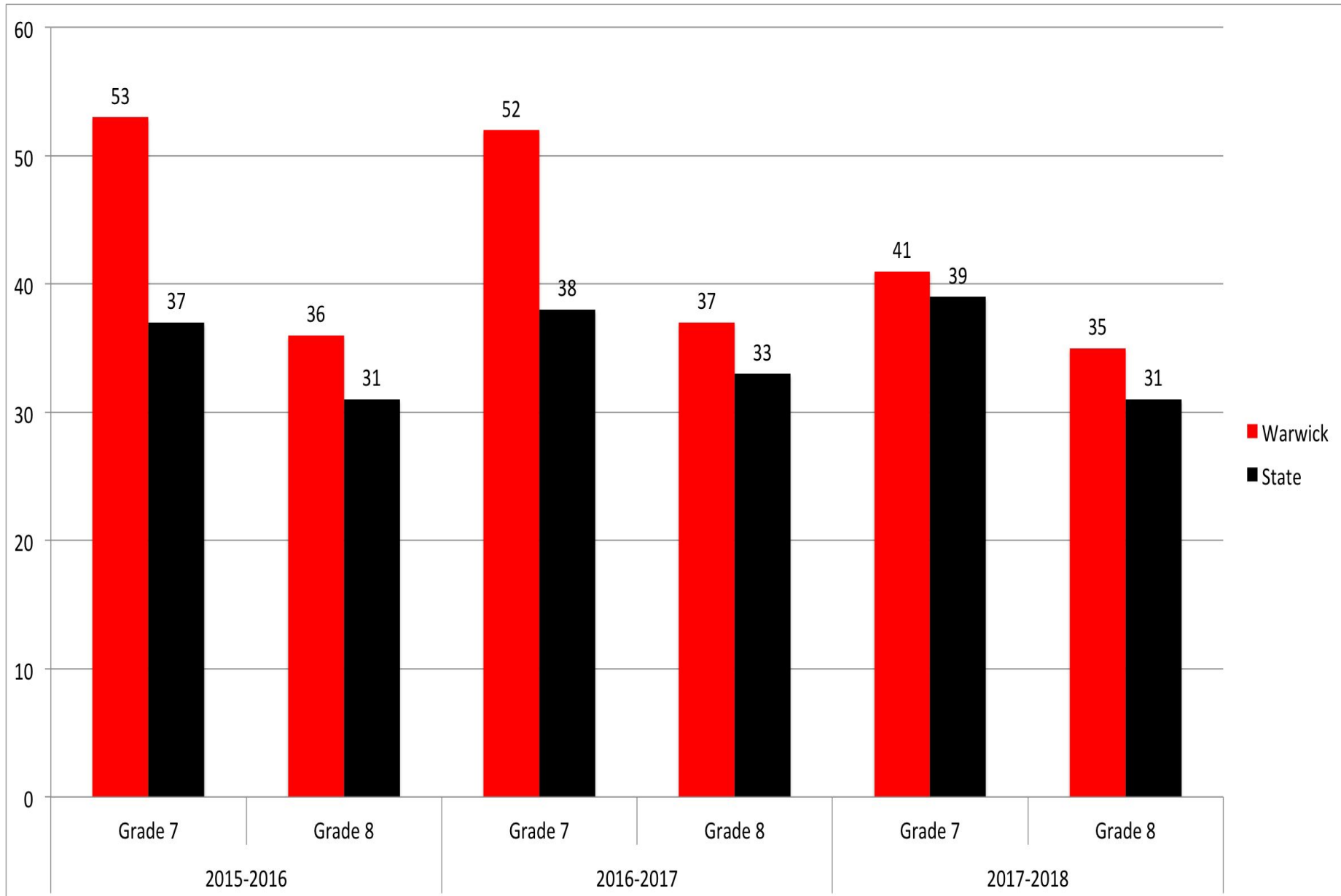


[View All College and Career Measures](#)



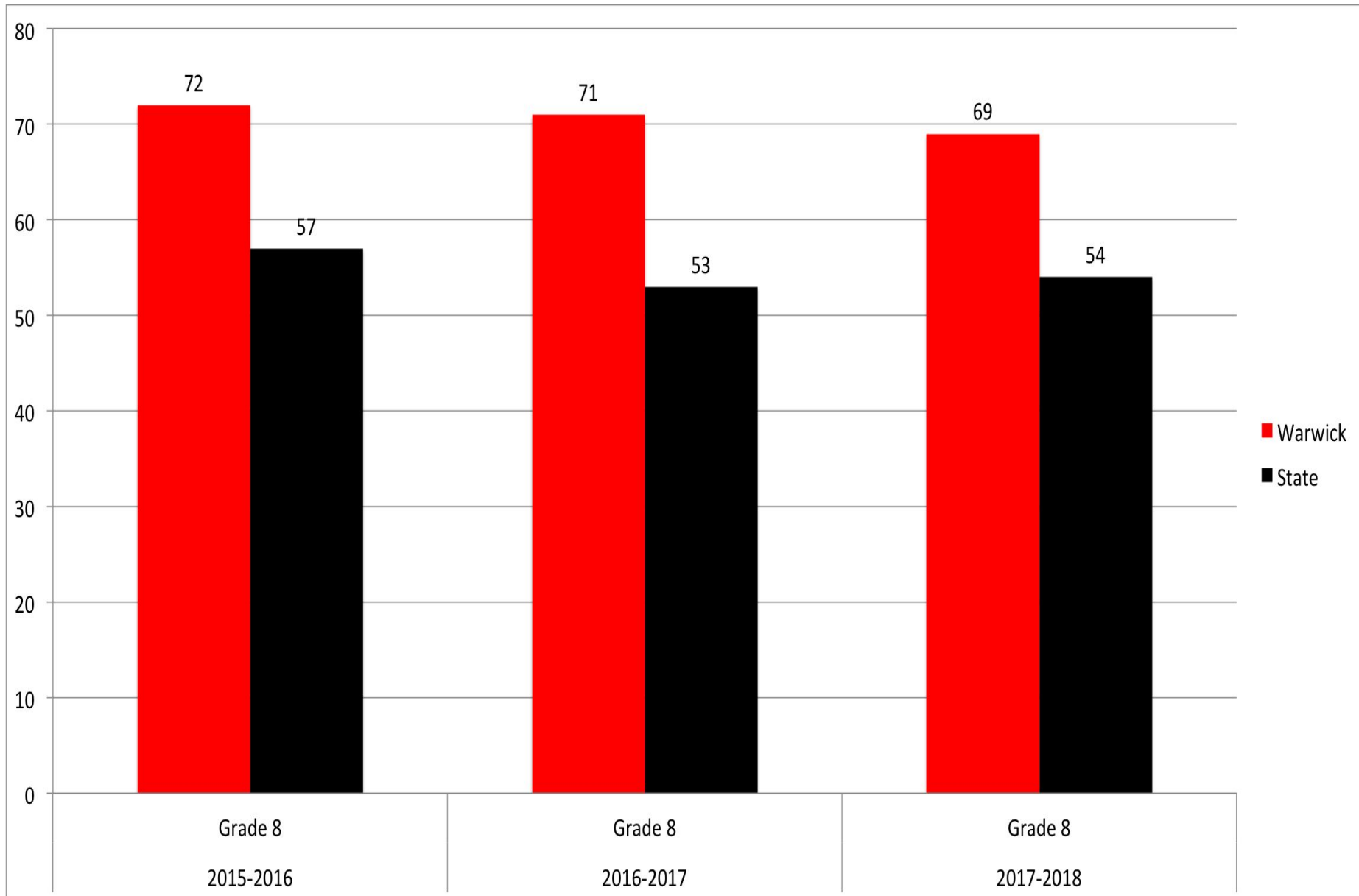
Warwick Middle School

PSSA Math



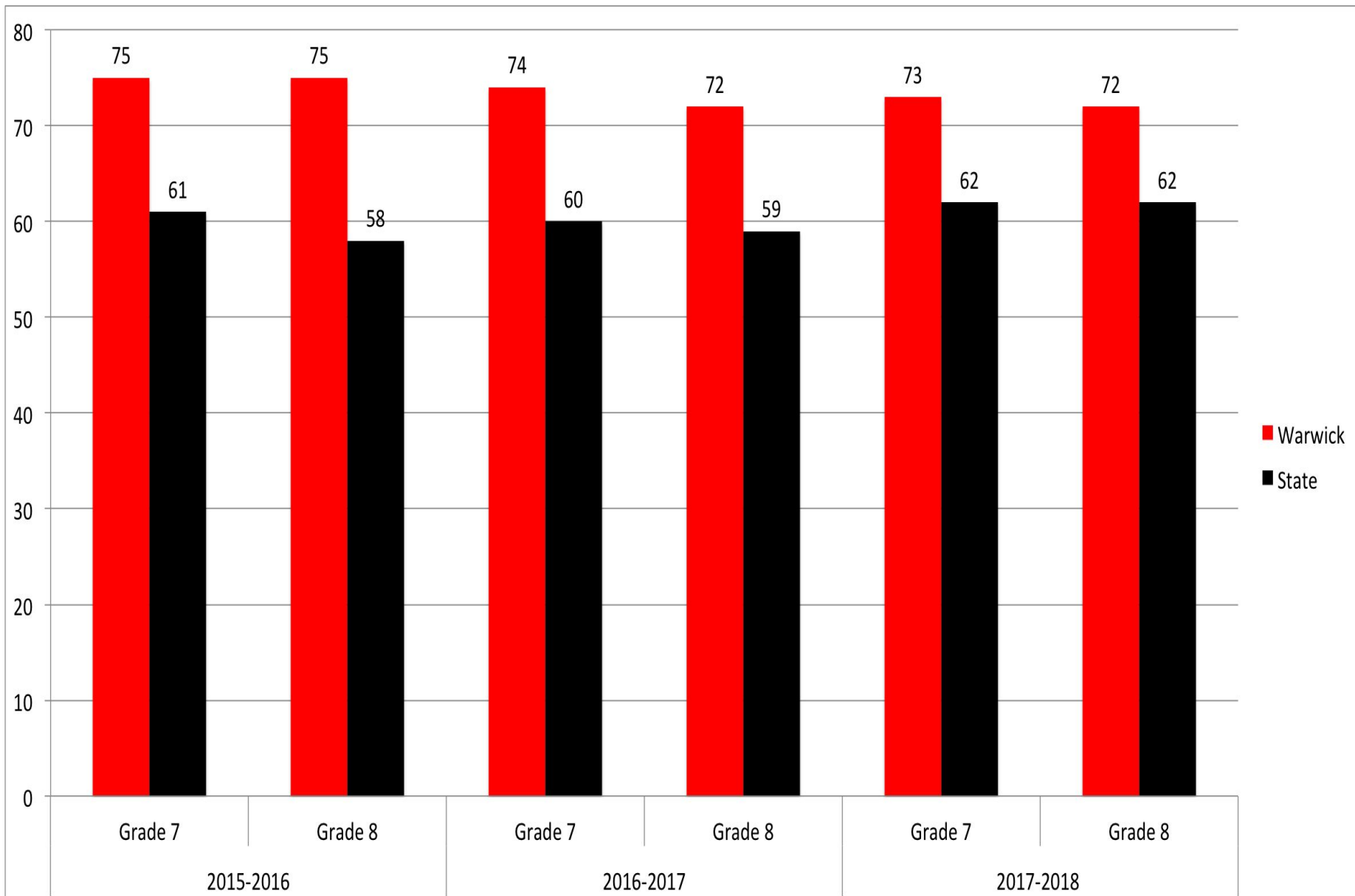
Warwick Middle School

PSSA Science



Warwick Middle School

PSSA English Language Arts



WMS PVAAS

	Math	ELA	Science
PSSA, Grade 7			
Value-Added	2018 3Yr A	2018 3Yr A	
Diagnostic			
PSSA, Grade 8			
Value-Added	2018 3Yr A	2018 3Yr A	2018 3Yr A
Diagnostic			
Keystone			
Value-Added	2018 3Yr A		
Diagnostic	Algebra I 		



Warwick High School



State Assessment Measures

Percent Proficient/Advanced in English Language Arts/Literature

All Student Group Meets Interim Goal/Improvement Target



Academic Growth Expectations in English Language Arts/Literatures

All Student Group Did Not Meet the Standard Demonstrating Growth



Percent Proficient/Advanced in Mathematics/Algebra 1

All Student Group Meets 2030 Statewide Goal



Academic Growth Expectations in Mathematics/Algebra 1

All Student Group Meets the Standard Demonstrating Growth



[View All State Assessment Measures](#)



On-Track Measures

Percent English Language Proficiency

All Student Group



Percent Regular Attendance

All Student Group Meets Performance Standard



[View All On-Track Measures](#)



College and Career Measures

Percent Career Standards Benchmark

All Student Group Did Not Meet Performance Standard



Percent Four-Year Cohort Graduation

All Student Group Meets 2030 Statewide Goal

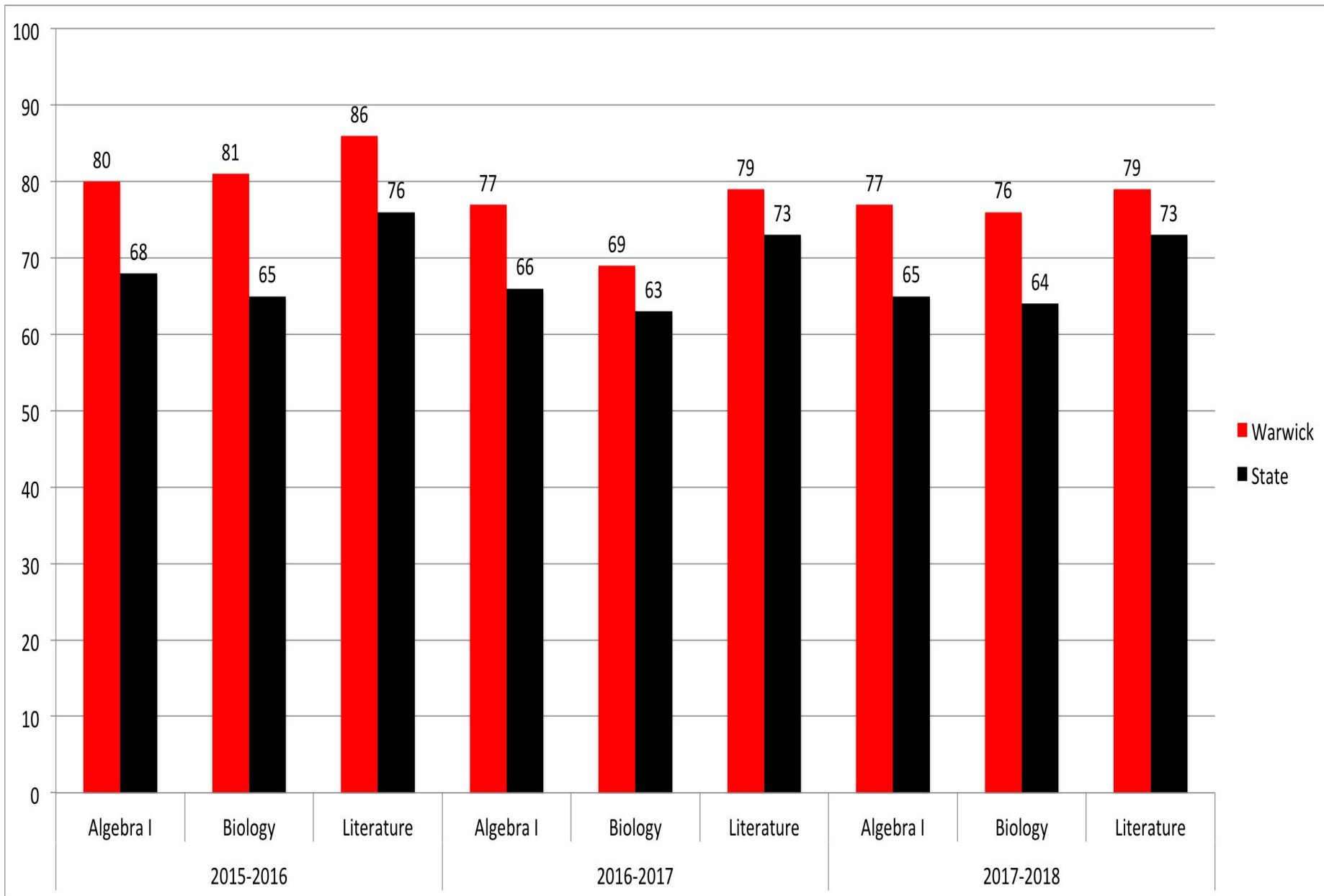


[View All College and Career Measures](#)






Warwick High School

Keystone Exams Grade 11



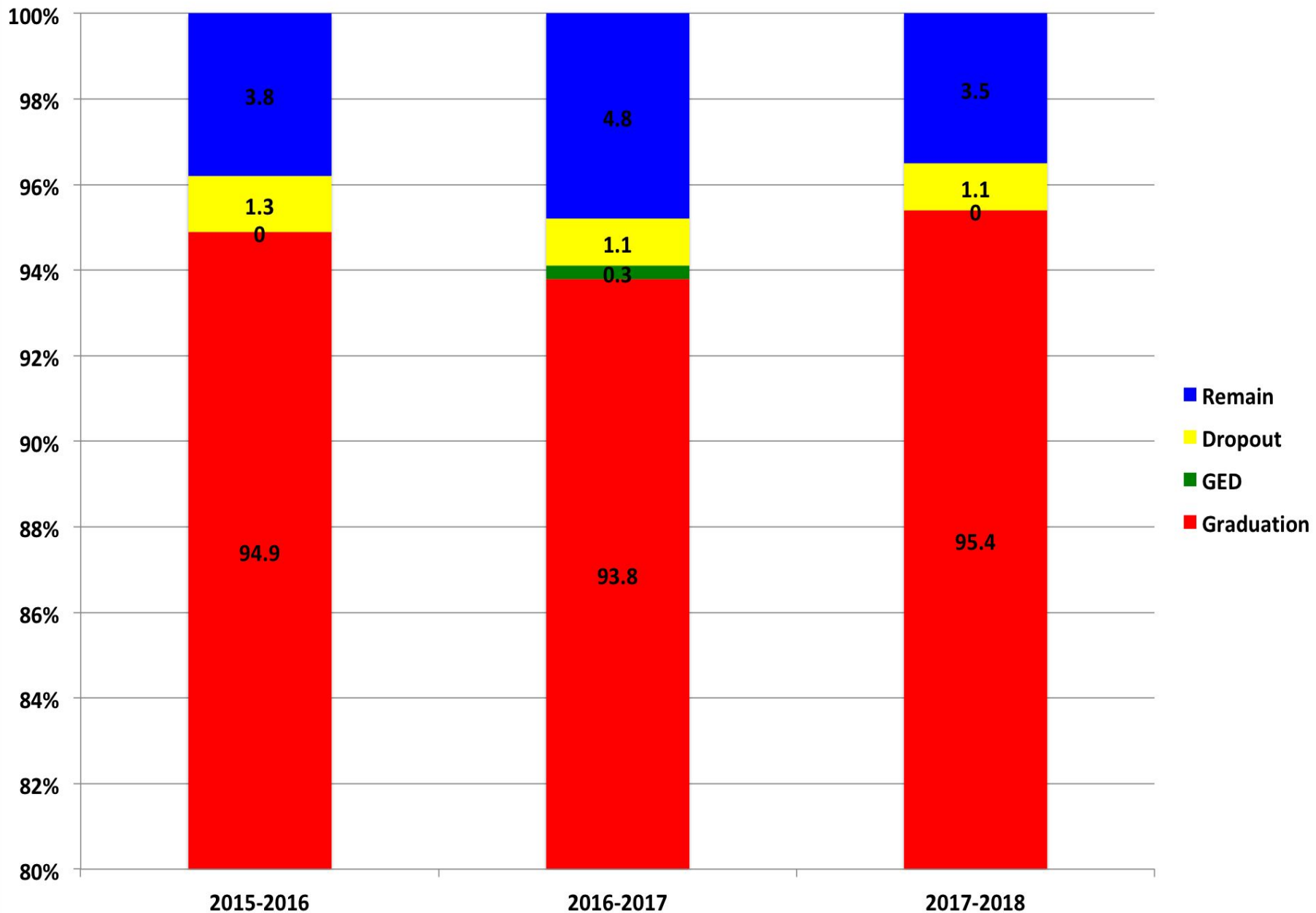
Warwick High School

PVAAS

	Math		ELA		Science	
Keystone						
Value-Added	2018	3Yr A	2018	3Yr A	2018	3Yr A
Diagnostic	Algebra I 		Literature 		Biology 	



Warwick High School Graduation Rate



Warwick High School

Advanced Placement

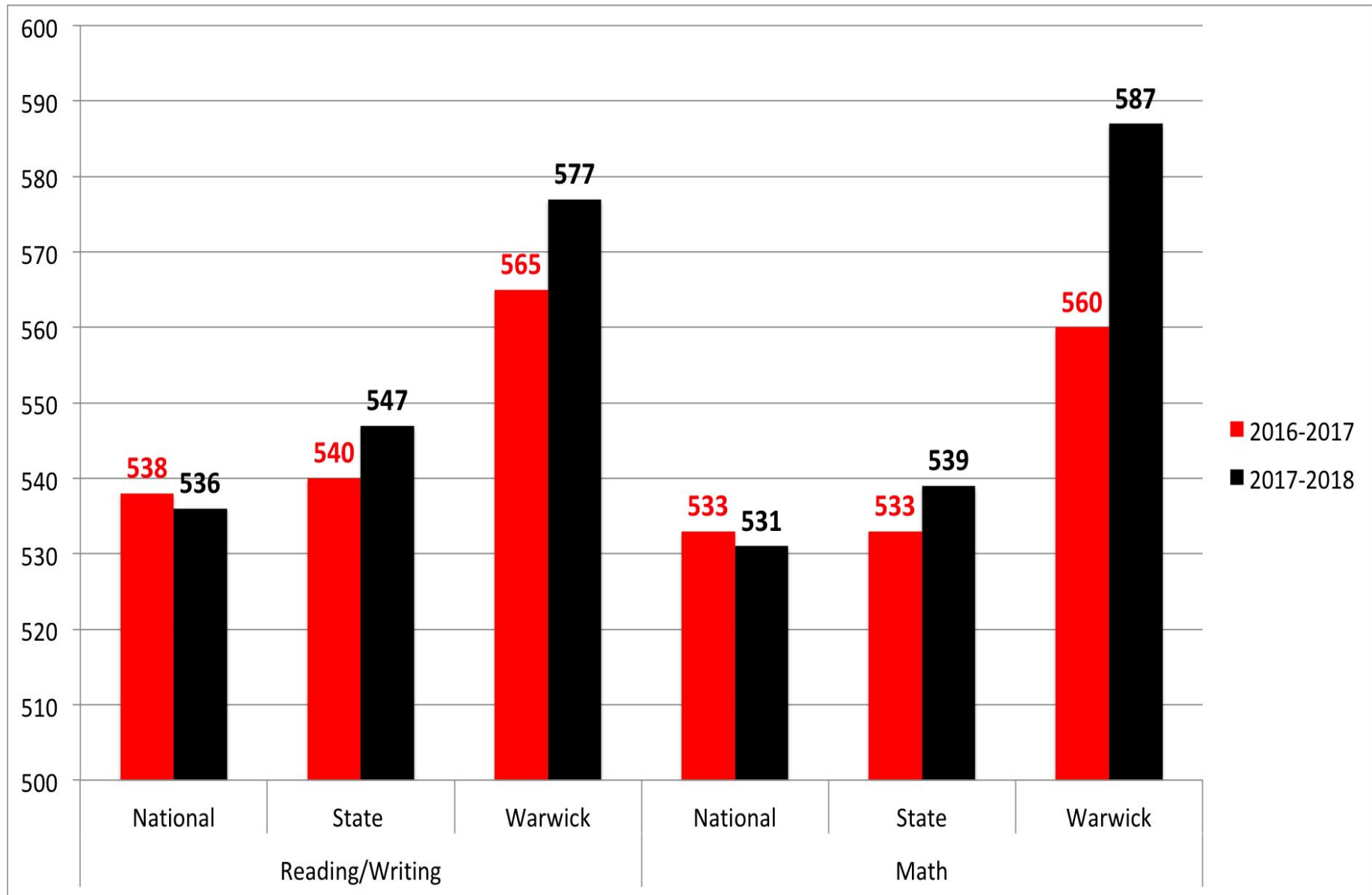
School Totals for this View	5	4	3	2	1	Total Exams
Number of Exams	95	78	65	22	3	263
Percentage of Total Exams	36	30	25	8	1	100
Number of AP Students	62	68	57	22	3	

Subject Totals	5	4	3	2	1	Total Exams
Studio Art: 2-D Design Portfolio		1				1
Studio Art: Drawing Portfolio	6	5	3			14
English Language and Composition	2	1				3
English Literature and Composition	6	6	14	2		28
Psychology			1	1	2	4
United States Government and Politics	4	6	6	2		18
World History		5	1	2		8
Calculus AB	38	23	7			68
Calculus BC	3	1				4
Computer Science A	17	3	1			21
Statistics	9	3	7	3		22
Biology	3	10	11	7		31
Chemistry	3	8	4	4	1	20
French Language and Culture		2	1			3
German Language and Culture	3	3	4			10
Spanish Language and Culture	1	1	5	1		8



Warwick High School

SAT



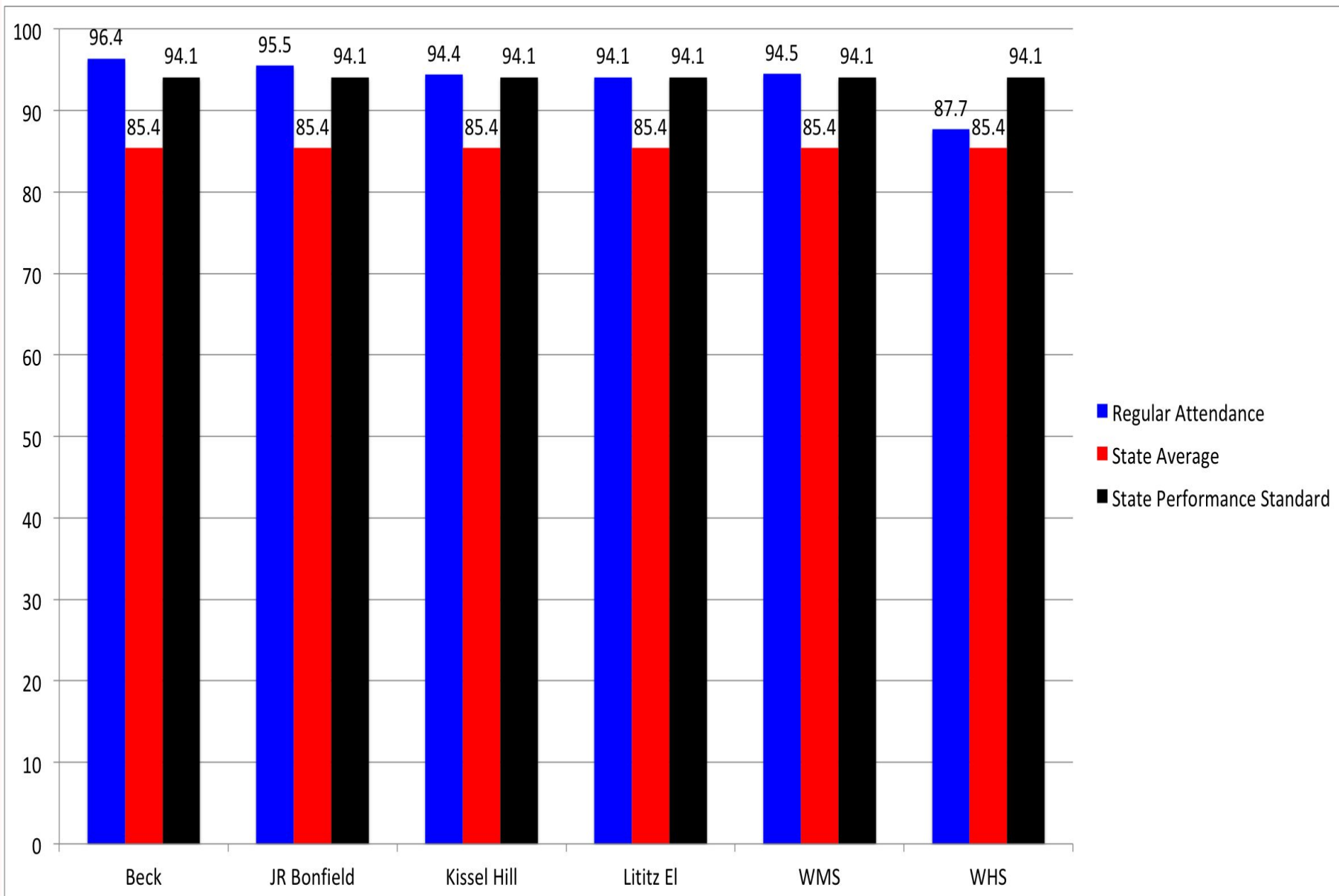
Warwick High School

ACT

Total Tested			English		Mathematics		Reading		Science		Composite	
Year	District	State	District	State	District	State	District	State	District	State	District	State
2014	45	27K	23.8	22.1	24.2	22.8	24.9	23.0	24.1	22.2	24.4	22.7
2015	80	30K	25.1	22.5	25.0	22.8	25.8	23.2	24.8	22.5	25.3	22.9
2016	64	31K	24.2	22.6	25.4	23.0	25.9	23.6	25.4	22.8	25.3	23.1
2017	51	31K	24.4	23.4	25.7	23.4	25.2	24.2	25.3	23.3	25.3	23.7
2018	58	28K	25.0	23.3	26.2	23.2	27.0	24.0	26.1	23.1	26.2	23.5

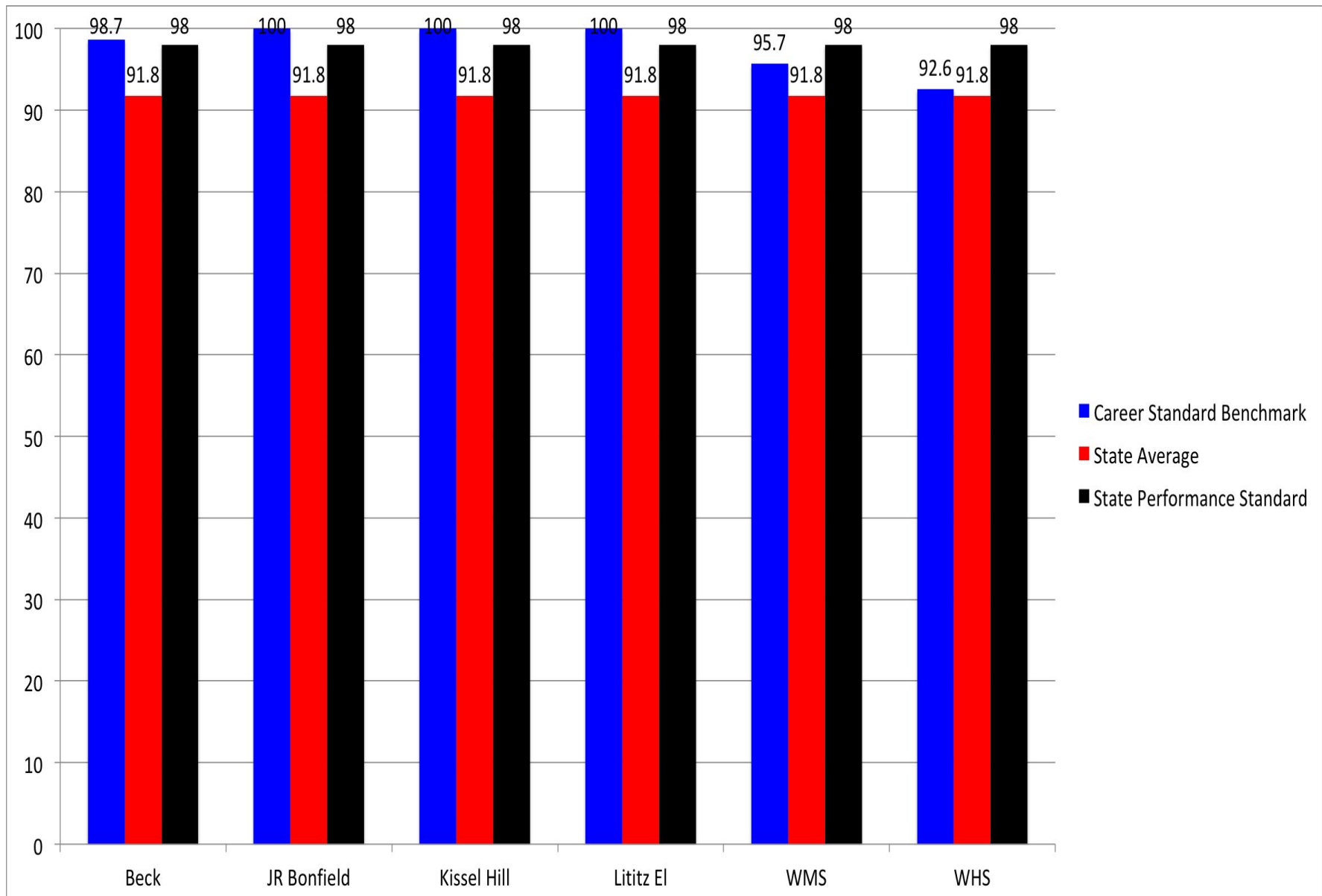


District Regular Attendance



District

Career Standards Benchmark



What have we done with the data...

- ❑ Communication with administrative team
- ❑ Developed a plan to share summative data with staff
- ❑ Conducted a data summit with department leads and LF's.
- ❑ Conducted grade level data meetings
- ❑ Conducted MS data session
- ❑ Plan for individual data analysis/plan for secondary staff in Nov.



Questions?



