

# Calculator Policy for the PSSA:

Pennsylvania Department of Education



The PSSA is designed so that calculators are not necessary for students to be successful. If students choose to use a calculator on the portions of the PSSA for which calculators are permitted, then they must adhere to the guidelines listed below.

Please Note: That if a student wants to restore the deleted programs he or she will have to back them up prior to the assessment.

The following are **NOT** allowed for the PSSA:

1. Non-calculators such as cell phones, PDAs, laptops, minicomputers, pocket organizers, etc.
2. Beaming capabilities. (These must be disabled.)
3. Wireless communication technologies. Calculators having wireless communication technologies may be used if those technologies are disabled.
4. Calculators with QWERTY keyboards or other typewriter-like keyboards or keypads (e.g. Dvorak).
5. Calculators with built in Computer Algebra Systems – CAS.
6. Calculators that make noise have paper tape need to be plugged in or talk unless these specific calculators are required as an accommodation. (Please refer to the Accommodations Manual.)
7. Sharing calculators by students during a test session.
8. **All programs/information stored in a calculator other than those that are factory installed. These must be deleted prior to using that calculator on any section of the PSSA and the memory must be cleared following each testing session.** Typically these are graphing calculators but scientific calculators may also contain stored programs.

**PLEASE NOTE:** Steps to clear most calculators may be found on the attached document

This is intended to be a general description of what is not allowed. It is not meant to be an exhaustive list of specific calculators, devices or technologies that cannot be used on the PSSA. As technology changes this policy will be reviewed and may also change.

# Method for Clearing Memory:

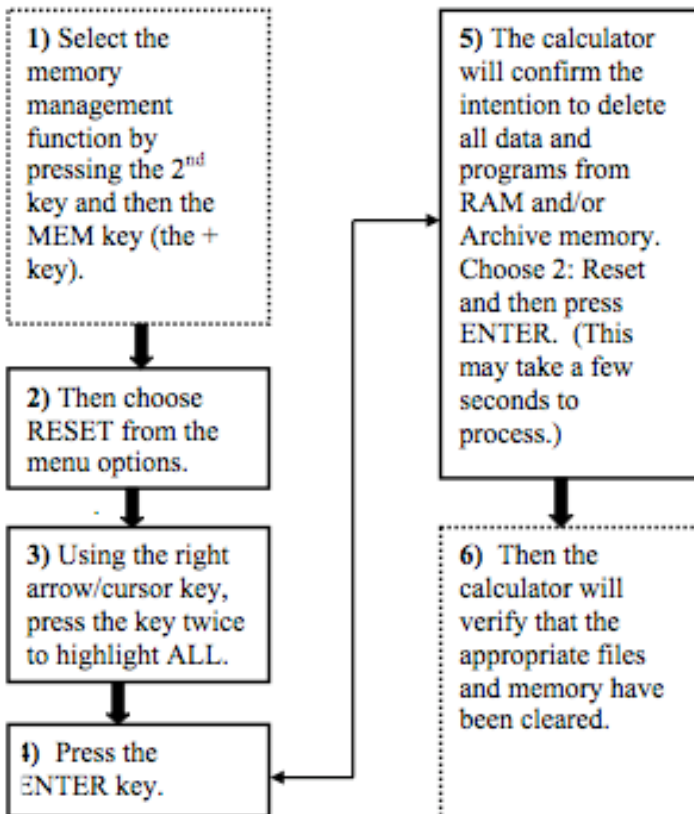
## Memory Management to Reset

Calculator Models: TI-81, TI-82, TI-83, TI-85 & TI-86 Plus

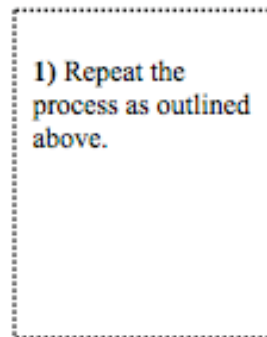
**Note:** All students may have access to calculators that meet the requirements during the administration of PSSA tests, when applicable. Prior to beginning and immediately following a test administration that may permit calculator use, students are required to clear the calculator memory and applications of the calculator to be used during the administration of the test.

The *Memory Management Function* of the selected Texas Instruments graphing calculators will permanently delete all data, programs, and list from both the RAM and/or Archive memories of the designated calculator.

### PRIOR TO TESTING



### AFTER EACH ADMINISTRATION



*Source:* Adapted from the Public Schools of Robeson County, Lumberton, NC. 2006